

## POTENTIAL

The only way to ensure the prosperity of any country is through quality education. It is necessary to foster the academic talent of young people who for various reasons do not enter university even though they have most of the prerequisites to do so.

The aim of the **POTENTIAL** project is to actively seek out students who have sufficient prerequisites for successful university study and, after they have finished their mandatory education, to continue studying in a suitable school and later enter university.

Similarly to the American *No Child Left Behind* programme, we try to increase the standards of accountability for municipalities, school districts and schools, while also providing parents more flexibility in choosing which schools their children will attend.

We have determined that a large percentage of students who have sufficient prerequisites for university study often finish their studies when they graduate from secondary school, or even earlier.

This mostly concerns students from families with a deficient education, social or cultural background. The abilities and talent of such children are not fully utilized to the detriment of not only the children, but also of municipalities, regions and society in general.

The Potential project involves testing the general academic prerequisites of 13-14-year-old students using a questionnaire-based survey.

### Potential – Benefits:

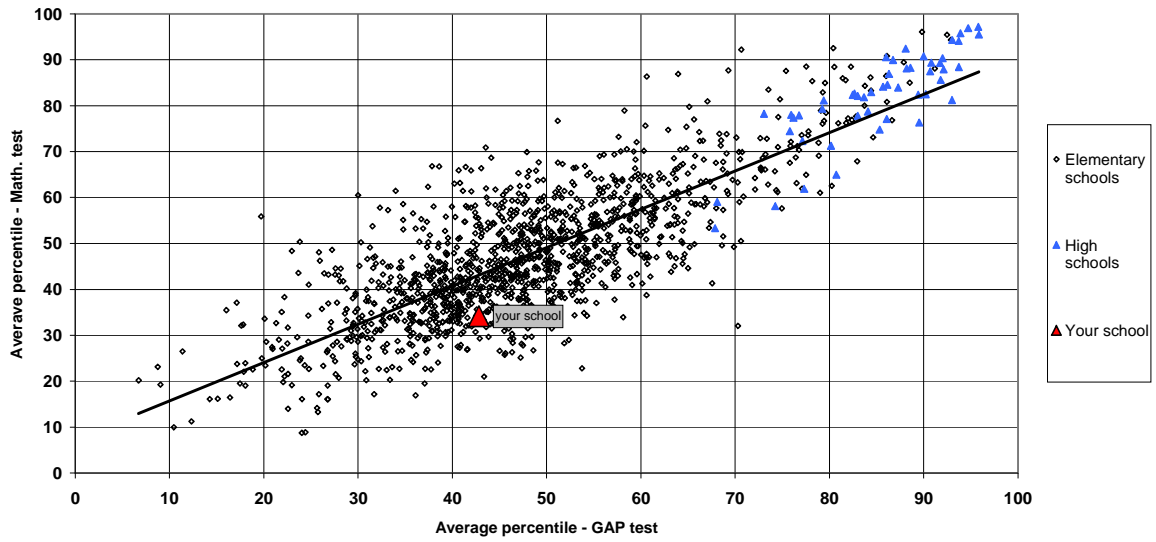
- Facilitation of students' choice of further study.
- Mapping of students' abilities and skills (academic potential).
- The results report is useful for the school's annual evaluation.

### Potential – Results

**Report for the school** – each school will receive a report containing an annotated graph and tables.

**Reports for students** – each student will receive information on his or her academic opportunities and “gaps” in his or her skills and abilities.

### Utilization of students' potential - Mathematics



Note: this graph shows utilization of students' potential in all classes which took part in the project (shown as dots). The line indicates the utilization by all classes of the same type.

Graph taken from the 2006 Potential report.